

A large event space, likely a ballroom or banquet hall, is shown. The ceiling is dark with numerous stage lights and spotlights. A large, illuminated sign in the center of the room reads "THE VENUE". The sign features a stylized white "V" that resembles a bird in flight. Below the sign, a stage area is visible with a white lattice backdrop and a small sign that says "WED". In the foreground, several round tables are set with white tablecloths, glassware, and floral centerpieces. The tables are arranged in a circular pattern, and the overall lighting is a mix of blue and purple hues.

THE VENUE

25

24





<a href="#">INTRODUCTION</a>	3
<a href="#">FACILITIES</a>	4
<a href="#">LOGISTICS</a>	5
<a href="#">THE FOYER</a>	6
<a href="#">THE VENUE</a>	7
<a href="#">THE STUDIO</a>	8
<a href="#">AUDIO VISUAL</a>	9
<a href="#">CATERING</a>	10
<a href="#">BEVERAGES</a>	11
<a href="#">FURNITURE</a>	12
<a href="#">FACT SHEET</a>	13
<a href="#">FLOOR PLAN</a>	14
<a href="#">CONTACT US</a>	15





INTRODUCTION

The Venue Alexandria is Sydney's premium major events space. A state of the art warehouse conversion with industrial and modern design elements, and three flexible event spaces.

The Main Venue is an expansive room featuring 7.6m high ceilings, polished floors and 90 metres of white walls that are ideal for large scale projection. Seamlessly divide the space with flexible rigging and floor to ceiling draping

The Foyer is accessible by vehicle and ideal for red carpet arrivals and pre-function experiences before continuing into The Main Venue.

The Studio is a virtual and hybrid events space which is perfectly suited to small conferences, filming, and video conferencing.

The Venue offers flexibility to build your event from the ground up, or select from one of our all inclusive solutions, and we are conveniently located between Sydney Airport and the CBD.

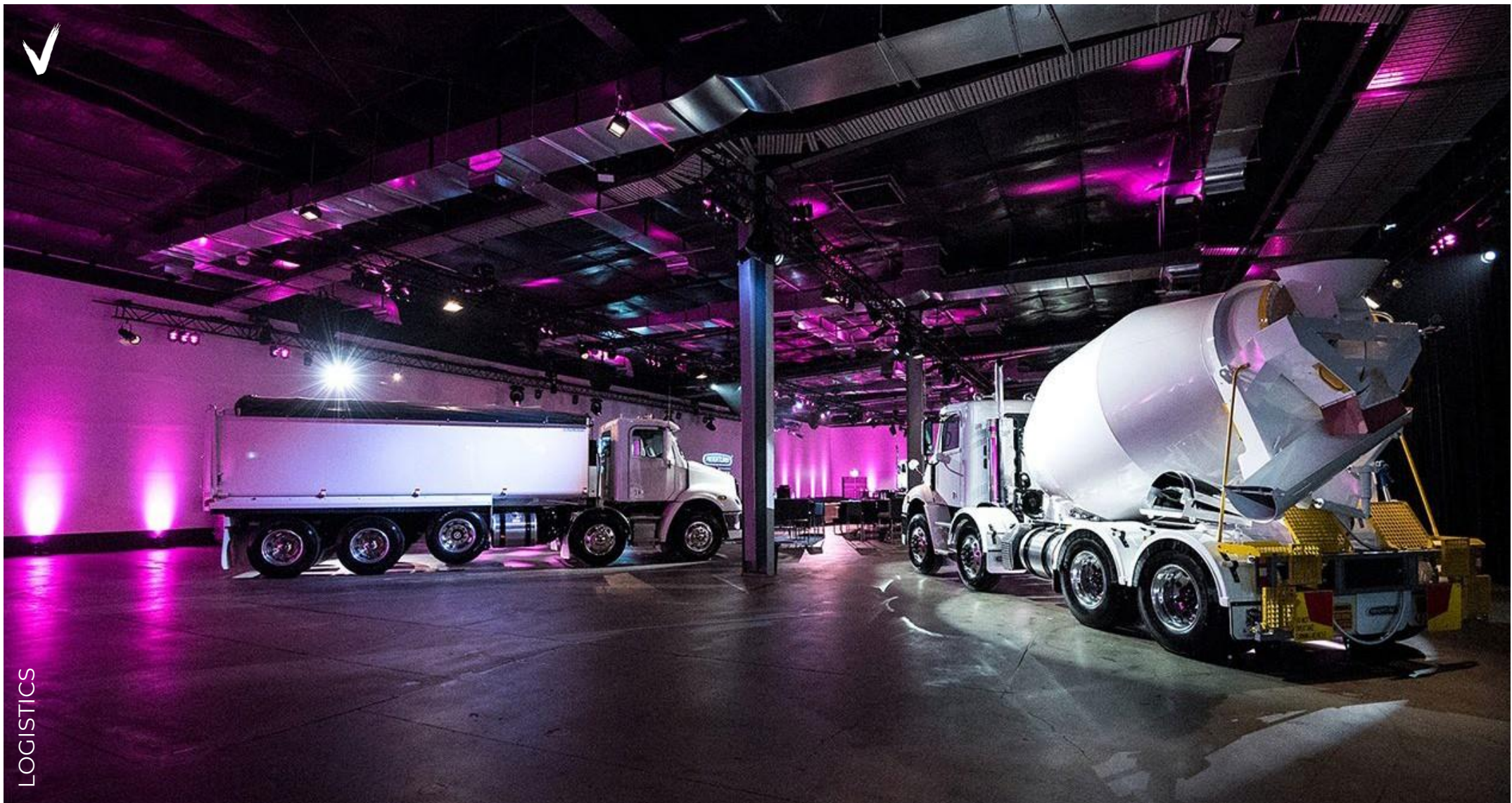




The Venue's 5-star facilities include;

- ample parking with direct lift access
- covered coach and VIP arrival area
- dedicated green room facilities
- reverse cycle heating/air conditioning
- high speed internet
- high clearance loading and production areas
- flexible rigging and draping solutions
- on site furniture and audio visual





Logistics at The Venue are easy, with high clearance loading facilities and direct level access to the event space. There are spacious areas dedicated to catering, production, and talent for a streamlined back of house experience.





THE FOYER

The Foyer facilitates an exceptional arrival experience with undercover coach and vehicle access. High ceilings and colourbond walls are complemented by natural light which filters in along the length of the eastern wall.

The Foyer is the perfect setting for pre- function drinks and canapes. Oversized double doors open to reveal the next experience as guests make their way into The Main Venue.





THE VENUE

The Venue can accommodate up to 1,400 people for any style of event. It is a stylist's ideal blank canvas with polished concrete floors, crisp white walls, and state of the art audio visual. Featuring full length projection walls, high ceilings and floor to ceiling draping, you can easily transform the space to suit your needs.

This modern warehouse has been specifically designed for major events and is poised to accommodate a vast array of occasions including gala dinners, conferences, product launches, film shoots, fashion shows, experiential events, trade shows and exhibitions.



The Studio is a flexible, multi-purpose space that can be used for live conferencing, filming, and broadcasting virtual or hybrid events. A comfortable, carpeted space with a bathroom, kitchenette and functional waiting room facilities, The Studio can host a live audience of up to 100 guests in front of a custom 8.4m x 3.3m projection backdrop.

With the technical resources, digital production services and experienced personnel to direct the most complex of shows, The Studio is equipped to provide the solution for your next virtual or hybrid event.





AUDIO VISUAL

Each space at The Venue Alexandria is equipped with industry leading equipment supplied by our talented in house audio visual partners, NW Group. They are backed by world leading technology and unrivalled inventory to deliver incredible production services from large scale experiences to high end launches, corporate events, virtual and hybrid presentations, conferences and weddings.

The NW Group team are intimately familiar with The Venue and are equipped to deliver a seamless audio visual experience based on your brief. Alternately, you are welcome to provide your own preferred partner subject to terms and conditions.





CATERING

The Venue welcomes accredited Gold Licence caterers subject to approval and agreed conditions met prior to your event. We are more than happy to recommend several outstanding event caterers who are familiar with the space. The possibilities are endless, from a casual breakfast to a formal dinner and everything in between.





## BEVERAGES

The Venue is fully licenced and provides all beverages required for your event. We have several beverage collections available for your consideration which can be tailored further to suit. Your chosen beverage is pre chilled in our cool rooms prior to your event and then handed to your caterer. The chosen caterer is responsible for the service of all alcohol throughout the engagement.





The Venue offers premium furniture hire solutions, so you don't need to rely on external hire companies. All our furniture is warehoused on site and kept in excellent condition. Our collection includes dining chairs, conference chairs, linen, cocktail furniture and casual furniture for any style of event.





# FACT SHEET

## THE PROPERTY

- Ideally located between Sydney Airport and the CBD
- Serviced by Mascot and Green Square train stations
- Includes ample parking with direct lift access to all venues
- High speed wireless internet
- Our in-house technical production partner NW Group offer state of the art audio-visual infrastructure
- Our in-house furniture partner offer any level of styling services and furniture hire
- The flexibility to work with any Gold Licence caterer - conditions apply
- Offers complete solutions including venue, audio visual, catering and furniture to ensure hosting your seamless event

## THE FOYER

Total Area (approx.) 550 m2  
 Main Area (approx.) 24m x 24m

- Under cover space with natural ventilation
- Specifically designed for coach access with VIP arrival experience
- Flexible space suitable for pre or post event drinks and catering
- Bathroom facilities available

## THE VENUE

Total Area (approx.) 1,900m2  
 Main Area (approx.) 56m x 27m  
 Side Area (approx.) 22m x 16m

- A capacity of up to 1,400 guests
- Fully air conditioned and heated
- Full bathroom facilities inside the venue
- 7.6m high ceilings
- Dedicated green room inside venue
- Serviced by level loading dock

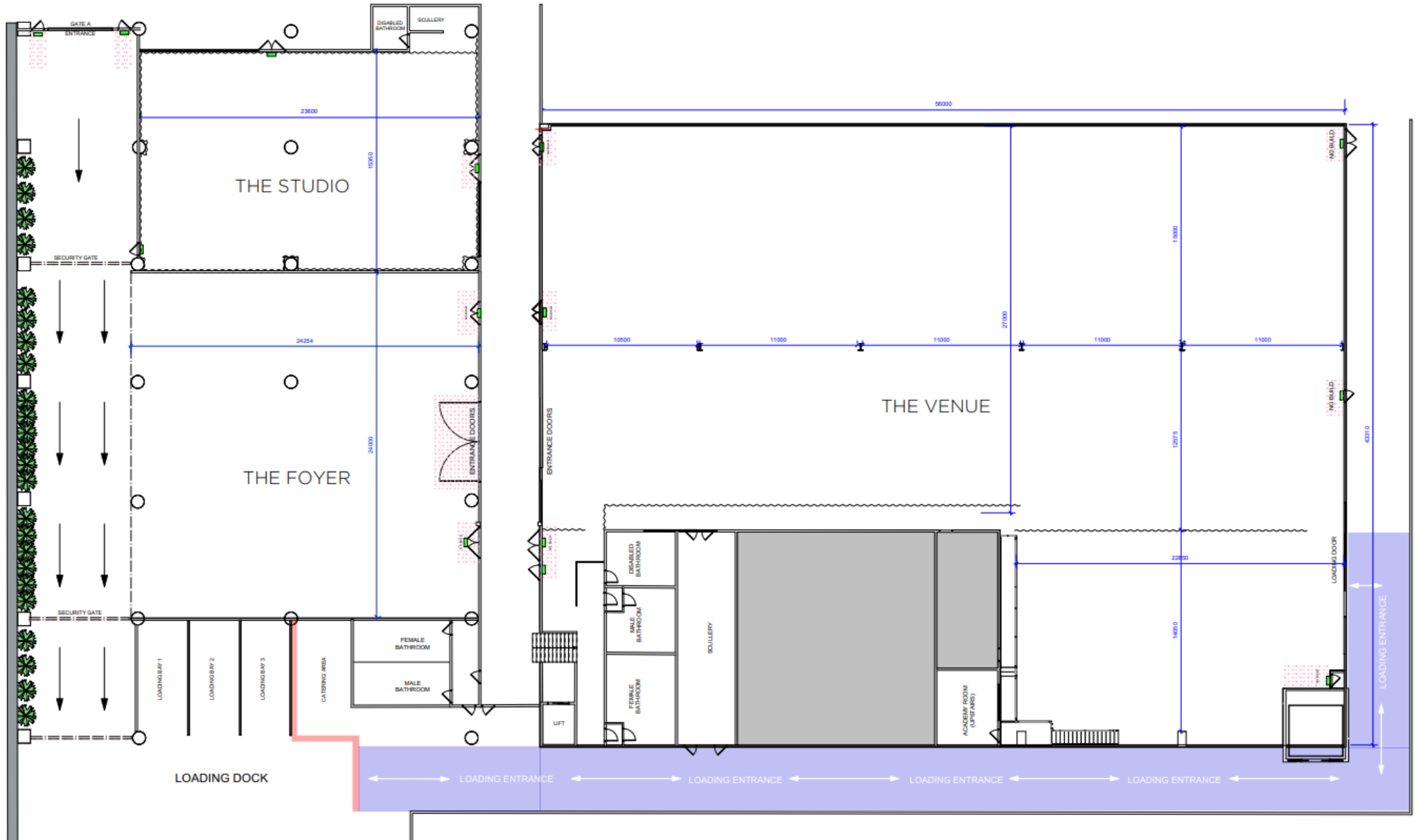
## THE STUDIO

Total Area (approx.) 350m2  
 Main Area (approx.) 23 m x 15m

- A capacity of up to 200 guests
- Fully air conditioned and heated
- Accessible toilet located within venue
- Softened with acoustic carpet
- Kitchenette facilities
- High spec online and hybrid capabilities from audio visual partner NW Group



# FLOOR PLAN







# THE VENUE


Contact us to discuss your event

T: 02 8324 6200

[info@thevenuealexandria.com.au](mailto:info@thevenuealexandria.com.au)

[www.thevenuealexandria.com.au](http://www.thevenuealexandria.com.au)



 Ground Level, 55 Doody Street Alexandria, 2015